

Princes Risborough North Signal Box



Newsletter



Winter 2019/20

Dear Supporter,

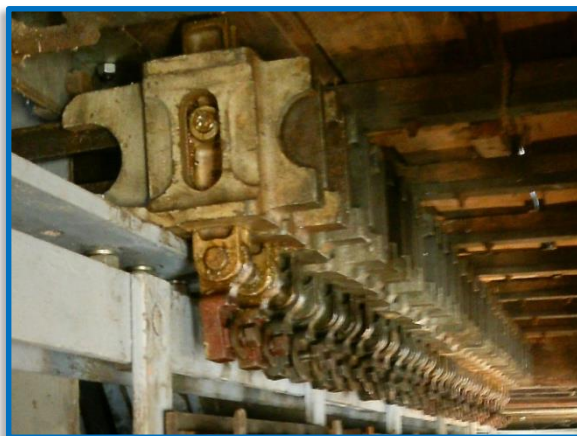
Welcome to another PRNB newsletter. It's hard to believe that it was just over 6 years ago that we got regular access to the box without having to arrange Network Rail supervision. A huge amount of work has gone into this project since then. I think we were all aware at the time that we would be working on this for many years to come. It's such a large structure and it was in very poor shape back then. Congratulations to all who have helped save it thus far. More to do of course so we plough on.

Princes Risborough Middle Box

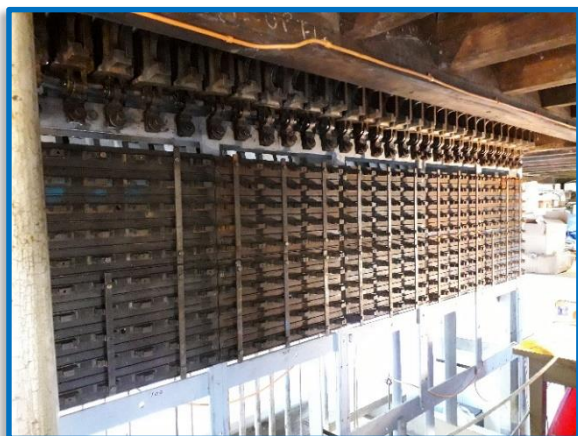
Work has progressed on the steelwork required to support the interlocking mechanism under the 29-lever section of frame south of the partition wall. This also includes the installation of the catch handles, quadrant plates, cam boxes, locking trays, pedestal cranks and wheels, drop rods and wire adjusters. Some of these parts were recovered from the box at Radyr years ago.



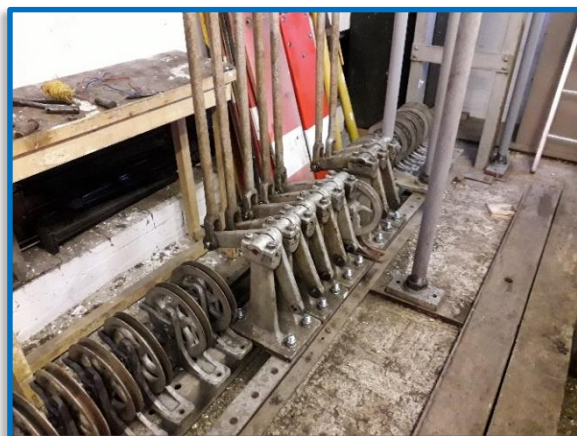
29 levers south of partition wall with token instrument yet to be commissioned.



Cam boxes translate horizontal drive from levers to vertical locking tappet movement.



Cast locking trays will hold the interlocking mechanism for the levers above the floor.



Pedestal cranks & wheels to drive point rodding and signal cables.



This section of lever frame will eventually form the operational part of the box, dubbed “Princes Risborough Middle Box” since it resides between the northern end of the North Box (our future demonstration/simulator) and the South Box which was demolished in 1968 and is now part of the station car park. In time it’s expected that there will be no public access to the Middle Box from the steep external staircase if we are granted listed building consent for an internal (public access) staircase to be built in the North Box.

Last Sash Window – Finally Restored

For some time now the image at the front of the box showed the final pair of sash windows yet to be restored, the boarding panel covering it clearly sticking out like a sore thumb. Not anymore! The rotten timber has been replaced and re-painted, new glass installed and all neatly put back in position.



Upstairs Toilet Wall and Floor

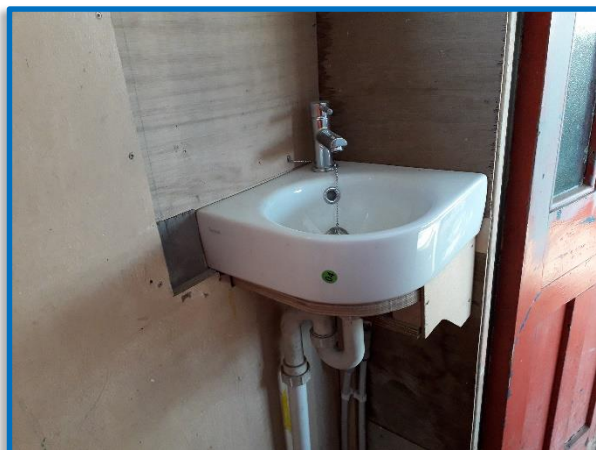
Another area of focus has been the repair of the external wooden wall and floor of the upstairs toilet. This being an addition to the box sometime between 1945 and 1953, to provide better facilities for the signal box staff. The wooden outside wall in the picture and the floor were rotten so had to be replaced. It was from this small toilet room back in 2011 that a water pipe above the toilet cubicle burst and sprayed out water across the operating floor for the best part of 6 months or more and ran through the floorboards and into the battery/relay room below. This was only discovered after a break-in and a request from the British Transport Police to visit and check for stolen items. Also evident from the photo is the damage caused by the leaking water that has stained the brickwork over many years.



Below are some images of the work being carried out. Jeff Skull can be seen through the hole as viewed from the track. He's relaying a few layers of bricks before installing the new timber as seen in the photo (lower left) and as viewed from inside (lower right).



As a result of this work it became necessary to re-plumb the toilet so the opportunity was taken to install a new corner basin and hot water heater. The hot water will also supply the new sink unit on the newly built cupboard behind the wall of the toilet itself.



Anne's Sponsored Walk

Another successful sponsored walk was completed last summer by Anne Saunders and a team of supporters in aid of the PRNB fund. The money raised this time being specifically targeted towards the utilities and toilet section upstairs in the box. It was a fairly hot and dry day as they completed the 8 mile walk using all the public crossing points along the branch line from Risborough to Chinnor. In total £1,200 was raised and we thank all involved for their gallant efforts. From what I observed they all seemed to have an enjoyable day out culminating in a well-deserved train ride back to Risborough with tea and cakes served from the catering trolley.



Outside Chinnor Signal Box.
From left to right. Rob Gusthart, Andrew Longworth, Rebecca Briant, Gareth Smith, Anne Saunders, Peter Scouse.



Risex

The adjacent photo shows our display layout at the Risex model railway exhibition last year. It gave us the chance to showcase the restoration project and help spread the word both for the box and railway as a whole. We collect donations and give out many leaflets. We've been attending this for the last 5 years and always get a lot of interest.



This year the exhibition will be on Saturday 22nd February. Attendance is always very good so why not come along to support us and enjoy the many model railway track layouts. Apparently it's quieter in the afternoon so if that's preferred, come then.

Admission – Adults £4 – Children £2

Light refreshments and homemade cakes available

Presented by Risborough & District Model Railway Club

RISEX 2020

MODEL RAILWAY EXHIBITION

Community Centre
PRINCES RISBOROUGH
Saturday 22nd February 2020
10am to 5pm



Featuring some of the very best local layouts, trade support & demonstrations.
Light refreshments will be available.
Community Centre, Wades Park, Stratton Road,
Princes Risborough, Bucks. HP27 9AX
See our website for full details [rdmrc.org.uk](http://www.rdmrc.org.uk)
Registered Charity No. 1173659



Information on this event can be found at the home page of the Risborough & District Model Railway Club
<http://www.rdmrc.org.uk/>

Princes Risborough Town Festival Week – PRNB Open Day

Once again we are delighted to open the signal box to the local community as one of the activities during the Princes Risborough Town Festival. This will take place on **Saturday 4th July from 10:00 to 16:00**. Entry to the signal box is **FREE**. Donations welcome.

Our Heritage Diesel Railcar will also be in operation throughout the day providing one of our four “Rock around the Chilterns” services this year. Please visit the website at <https://www.chinnorrailway.co.uk/product.php?xProd=283> for details, ticket prices and times.

Additional PRNB Open Days

As well as opening during the festival week, we will be open to the general public at large and railway enthusiasts on **Saturday 25th April and Saturday 10th October from 10:00 to 16:00**.

Children must be accompanied by an adult at all times. There is a rough footpath to the signal box from platform 4 and a steep staircase so robust footwear is strongly advised. Keep away from the edge of all platforms. Trains pass at high speed through some of them.

Any comments/feedback to myself at news@risboroughbox.org.uk (Alan Jeffries)

Donations welcome. Cheque payable to CPRRA

Postal Address: PRNB, 27 Bedfordshire Way, Wokingham, Berkshire, RG41 3BA

www.risboroughbox.org.uk



Risborough Box Group is a team within the Chinnor and Princes Risborough Railway Association